

## 7. Internet Browser Settings

To ensure that your browser is optimized for use with the Taleo application, make sure that your settings are as described in the following sections.

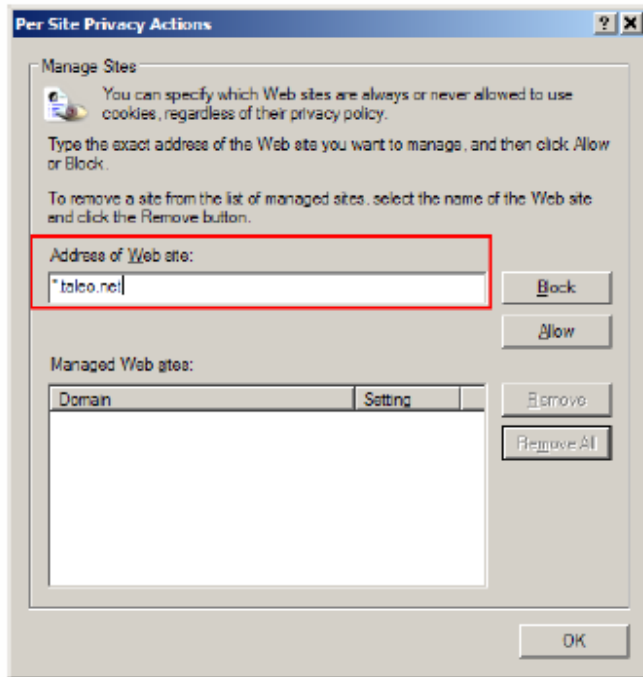
### 7.1 Cookie Policy Configuration

The default Privacy setting for IE 7 is **Medium**, and that setting is normally sufficient to ensure the proper handling of cookies used by the Taleo application.

If a WebTop user is experiencing issues using Taleo, check that browser settings are set as described below.

#### Using Internet Explorer 7.0

1. In the browser menu go to **Tools > Internet Options > Privacy**.
2. Click **Advanced**.



## 7.2 Enabling JavaScript

JavaScript is required for the proper function and use of Taleo WebTop modules. Here is how to enable JavaScript for IE 7.

1. In the browser menu, go to **Tools > Internet Options**.
2. On the **Security** tab, click **Internet**.
3. Click **Default Level**, and then click **OK**.

If issues are occurring (application is not functioning as expected), additionally try the following:

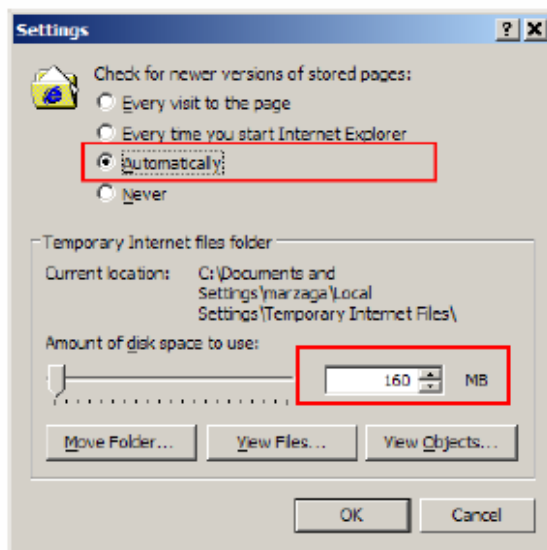
1. In the browser menu, go to **Tools > Internet Options**.
2. On the **Security** tab, click **Internet**, and then click **Custom Level**.
3. Under **Active scripting**, click **Enable** or **Prompt**.
4. Click **OK**, and then click **Yes**.
5. Click **OK**.

## 7.3 Cache Settings

Many browsers retain files of Web sites in memory for a certain period of time in what is called the "cache." This saves browsing time by accessing the file directly from your computer's hard drive rather than gathering it from the Internet, thereby increasing overall performance. The section below describes the optimal caching policy and size configuration for best use of Taleo.

## Using Internet Explorer 7.0

1. Go to **Tools > Internet Options > General > (Browsing history) Settings**.
2. For the setting **Check for newer version of stored pages**, select **Automatically**.
3. Ensure that the Amount of disk space to use is greater than 100 MB but less than 500 MB. For best performance, browser cache size should be 5%-10% of the total size of the disk where the cache resides, up to a maximum of 500 MB. Setting the cache size higher than 500 MB might actually reduce performance.

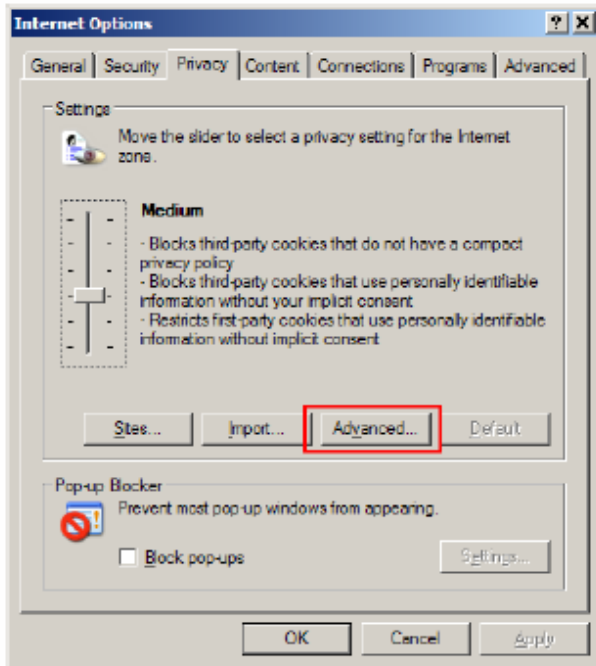


4. Click **OK**.
5. Return to the **Internet Options** window, click **Apply** or **OK**.

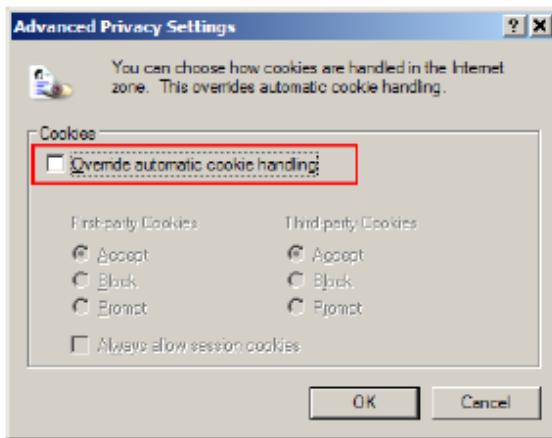
## 7.4 Printing Configuration

For better (faster) printing results, set your browser as follows:

1. Go to **Tools > Internet Options > Advanced**.
2. Scroll down to the **Printing** settings. Select **Print background colors and images**. Click **OK**.



3. In the **Advanced Privacy Settings** window, make sure that **Override automatic cookie handling** is not selected. Then click **OK**.



4. On the **Privacy** tab, click on the **Sites** button.
5. In the **Per Site Privacy Actions** window, add "taleo.net" (without quotes) in the **Address of Web site** field. Click **Allow** then click **OK**.